



Angstrom

BIOTECH PVT. LTD.

BIOCHEMISTRY

SEROLOGY

LAB AIDS

COVID-19 TEST KIT

RAPID TESTS



+91 95991-94831



info@angstrombiotech.in



www.angstrombiotech.in





About Us

ANGSTROM Biotech is a venture by a committed, dedicated team of biotechnologists and management professionals. We have more than 1000 distributors. This was achieved within a span of Twenty-one years. We are listed in Indian best IVD companies with turnover of over 400-500 Crores. We have earned the complete trust of our customers through our product range of in vitro diagnostics by maintaining consistent quality which gives complete satisfaction to each customer.

A very high bench mark of “Quality Consciousness” is the basis of our tenets during production and services.

Our strength is our well trained and highly motivated biochemists with “Complete Satisfaction” as the foundation for growth of the organization.

Our Headquarter and Marketing Office is located in Gurgaon, the millennium city of India. Branch offices in metros like New Delhi & Vadodara ensure a rapid customer response time and optimal market reach.

Our Vision

Our vision is to become a global player in the diagnostics industry with a reputation for consistently developing and manufacturing high quality, cost-effective products as well as amazing customer service.



QUALITY ASSURANCE

Independent Quality Assurance department establishes policies and procedures designed to monitor all aspects of the manufacturing process like inspection of raw materials and packaging materials, on-line production checks and finally, finished product release testing.



EXTERNAL QUALITY ASSURANCE SERVICES

ANGSTROM is now the only company that provides a Performance Data Sheet along with every product pack with the evaluation data of each of our products with six Internationally Recognized control sera.



DEDICATED TEAM

ANGSTROM has dedicated personnel committed to prompt product delivery and complete customer satisfaction along with a team of well-trained engineers for after sales services that add up to an excellent sales and service network.

OUR PRODUCTS

AngPCR

Covid-19 Real-Time PCR Kit



Description

The primer and probe provided is designed based on the conserved sequence of the novel coronavirus (COVID-19), and has a high detection rate of the target gene fragment. This product has no cross-reactions among positive samples of Coronavirus (NL63, HKU1, 229E, Oc43), Influenza A virus, Influenza B virus, Respiratory syncytial virus, Adenovirus, Parainfluenza virus, Klebsiella pneumoniae Streptococcus pneumoniae, Haemophilus influenza, Pseudomonas aeruginosa, Legionella pneumophila, Pertussis, Staphylococcus aureus, Mycoplasma pneumoniae, Chlamydia pneumoniae. The negative and positive rates of detecting commercial reference materials were 100%. Minimum detection limit: 500 copies/mL.

Benefits of RT PCR-Kit

Purpose Programming Purposes	Primarily for clinical purposes
Kind of Sample Needed	Swab typically (nasal and throat) or lower respiratory tract specimen when possible or appropriate (e.g. sputum or fluid from lung washings)
Can Administer Point of Care?	Yes, if conducted by a PCR device that is available at point of care (some devices are light enough to install at point of care)
Can Administer In A Self-Test Kit Environment?	No as it needs a PCR device. However swabs can be self administered including at home
How Long It Takes For The Test To Be Administered	It depends: some PCR tests can take One hours.



Covid-19 Real-time PCR Kit-Inclusions

- 1) COVID-19 Enzyme Mix (Lyophilized)
- 2) COVID-19 Primer-Probe Mix
- 3) Enzyme Mix Buffer (5x)
- 4) COVID-19 PCR Positive Control (Plasmid)
- 5) COVID-19 PCR Negative Control (DEPC-Treated H₂O)

Ordering Information

				Units Per Box		
S. No.	Product Code	Description	Type	Small	Medium	Large
1	ANGPCR	Covid-19 Real-time PCR Kit (96 Test / Kit)	Real Time PCR	10	50	100



Angcard

Dengue NS1 Antigen

Description

Dengue Ns1 Antigen test is rapid and qualitative test for the detection of Dengue virus Ns1 antigen in human serum / plasma.

This kit is for professional use and only for initial screening test and reactive samples should be confirmed by supplemental assay such as nucleic acid test and other immunological assays.



Ordering Information

Units Per Box						
S. No.	Product Code	Description	Type	Small	Medium	Large
1	DECC010	DENGUE NS1 ANTIGEN (10 Test / Box)	Rapid Card Test	10	50	100



Description

Cardiac Troponin I (cTnI) is a cardiac muscle protein with a molecular weight of 22.5 kDa. In the heart it forms a protein complex together with Troponin T and C. The troponin complex is broken up following myocardial damage, and the individual protein components are released into the bloodstream. Although Troponin I is also found in skeletal muscles, this form differs from cTnI in its amino acid composition. This distinction allows the two forms of Troponin I to be distinguished immunologically and thereby ensures an accurate test assay. cTnI is released to blood circulation soon after the onset of cardiac damage. Approximately 4 to 6 hours following an acute myocardial infarction (AMI), a detectable level of cTnI can be detected with our immunochromatographic test. While the normal serum level of cTnI is below 0.06ng/ml, levels as high as 100-1300ng/ml in some AMI patients

One Step Detection Kit for Cardiac Troponin I



Ordering Information

S. No.	Product Code	Description	Type	Units Per Box		
				Small	Medium	Large
1	TRP010	Troponin- I Card (10 Test / Box)	Rapid Card Test	10	50	100



Angcard

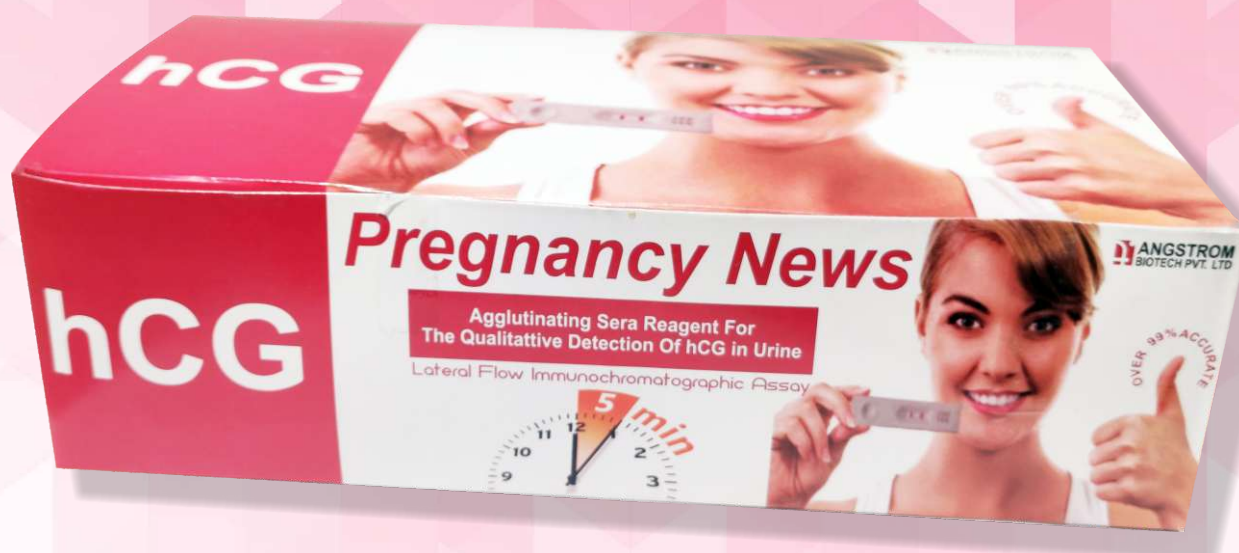
hcg - Strip (Strip for test of Pregnancy)

This strip test is for detection of β hCG in urine which is an indicator for pregnancy.

Description

Human chorionic gonadotropin, hCG belongs to the family of glycoprotein hormone. It consists of two non-identical subunits the alpha and the beta subunits. The beta subunits of hCG due to the unique amino acid sequence is structurally different from that of other hormones like LH, FSH and TSH. This renders the beta subunits its biological and immunological specificity. The hCG is produced by the developing placental tissue after implantation of the fertilized ovum in the uterine wall. Hence its level begins to rise and becomes detectable in urine as early as 5 to 10 days after conception and reaches up to 100 IU/ml during the first trimester.

Thus the detection of hCG in urine acts as an excellent tool for the confirmation of pregnancy in normal females. However, the urine hCG level is also found to rise in case of trophoblastic or nontrophoblastic neoplasm like hydatiform mole and choriocarcinoma conditions.



Ordering Information

Units Per Box

S. No.	Product Code	Description	Type	Small	Medium	Large
1	HCGS100	hcg-Strips (50 Test / Box)	Rapid Card Test	10	50	100

Angcard

Typhoid (IgG/IgM) Test



Description

For rapid qualitative detection of both Salmonella typhoid antibodies, IgG and IgM in human serum and plasma. Only for In Vitro diagnostic use.

The Typhoid IgG/IgM Rapid Test is a lateral flow chromatographic immunoassay. The test cassette consists of: 1) a burgundy colored conjugate pad containing recombinant H antigen and O antigen conjugated with colloid gold (HO conjugates) and rabbit IgG-gold conjugates, 2) a nitrocellulose membrane strip containing two test bands (G and M bands) and a control band © band). The M band is pre-coated with monoclonal anti-human IgM for the detection of IgM anti-S. typhi, G band is pre-coated with reagents for the detection of IgG anti-S. typhi, and the C band is pre-coated with goat anti rabbit IgG.



Ordering Information

S. No.	Product Code	Description	Type	Units Per Box		
				Small	Medium	Large
1	TYP050	Typhoid (IgG/IgM) (50 Test / Box)	Rapid Card Test	10	50	100



Angcard

HCV Cards

Description

Rapid test device for the qualitative detection of antibody Hepatitis - C virus in human serum or plasma.

Lateral Flow Immunochromatographic Assay



Ordering Information

Units Per Box						
S. No.	Product Code	Description	Type	Small	Medium	Large
1	HCV050	HCV Cards (50 Test / Box)	Rapid Card Test	10	50	100

Angcard

Covid-19 Antigen Test Kit



Description

We are Antigen test kit Manufacturer. An antigen is a molecule capable of stimulating an immune response. They may be proteins, polysaccharides, lipids or nucleic acids. Each antigen has distinct surface features that are recognized by the immune system. SARS-CoV-2, the virus that causes COVID-19, has several known antigens, including its nucleocapsid phosphoprotein and spike glycoprotein, which are the visible protrusions on its surface. An antibody is a Y-shaped protein produced by B cells of the immune system in response to exposure to antigens. The tip of each Y-shaped arm contains antigen binding sites (paratopes) that bind to a specific portion of the antigen's surface (epitope). This binding helps to eliminate antigens from the body, either by direct neutralization or by "tagging" them for elimination by other arms of the immune system. When infected with SARS-CoV-2, the body produces antibodies that bind specifically to the spike proteins and other antigens to help eliminate the virus. This binding can be harnessed to develop antibody and antigen-based diagnostic tests.



Ordering Information

S. No.	Product Code	Description	Type	Units Per Box		
				Small	Medium	Large
1	ANGCARD	Covid-19 Antigen Test Kit (25 Test / Box)	Antigen Test Kit	10	50	100



Angcard

HBsAg (Hepatitis-B Card)

Description

Hepatitis refers to inflammation of liver. Chemicals, toxins and virus can cause hepatitis. Most common agent causing acute hepatitis is virus. Of these Hepatitis B virus leads to severe forms of disease. After incubation period of 1-6 months surface antigen (HBsAg) of Hepatitis B virus appears in blood serving as first serological marker for detection & diagnosis of HBsAg in serum.

HBsAg surface antigen consists of lipid, carbohydrate & protein elements. This disease is transmitted sexually or intravenously, so it is important to screen blood donors before collection of blood.

This rapid kit is for detection of HBsAg in serum or plasma.



Ordering Information

Units Per Box

S. No.	Product Code	Description	Type	Small	Medium	Large
1	HBC050	HBsAg (Hepatitis-B Card) (50 Test / Box)	SERUM OR PLASMA.	10	50	100

Angcard

HIV 1/2 CARD



Description

Detection of HIV 1 & HIV 2 in Serum Plasma



Ordering Information

S. No.	Product Code	Description	Type	Units Per Box		
				Small	Medium	Large
1	HIV050	HIV 1/2 CARD (50 Test / Box)	SERUM OR PLASMA.	10	50	100



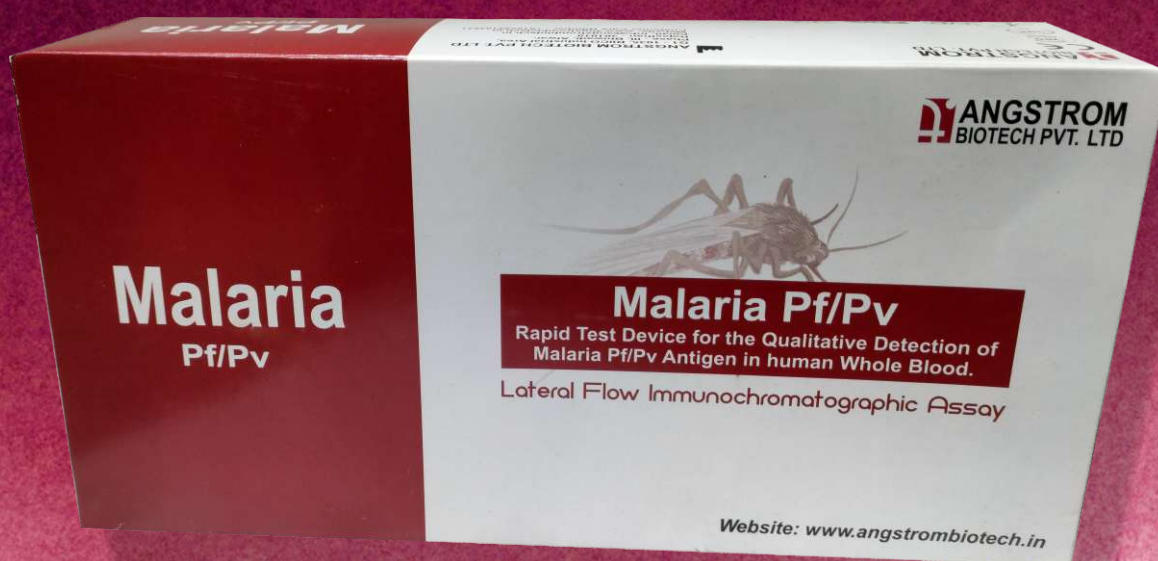
Angcard

Malaria Pf/Pv

Description

ANGCARD Malaria Pf/Pan Ag is chromatographic immunoassay kit for rapid qualitative determination of malaria infection using blood specimen.

Malaria is a parasitic disease caused by Plasmodium transmitted from one human to another by bites of infected female Anopheles mosquitos. Malaria antigens currently another targeted by rapid diagnostic test are lactate Dehydrogenates (pLDH), Histidine Rich Protein (HRP II) and Aldolase. ANGCARD Malaria Pf/Pan Ag can detect all 4 kinds of malaria, including P.falciparum, P.vivax, P.malariae, P.ovate. Detection limit of this kit is approx.. 25 parasites/ul of blood.



Ordering Information

Units Per Box						
S. No.	Product Code	Description	Type	Small	Medium	Large
1	MLPAN Ag	Angcard Malaria PF/PAN Ag (50 Test / Box)	Rapid Card Test	10	50	100
2	MLPV Ag	Angcard Malaria PF/PV Ag (50 Test / Box)	Rapid Card Test	10	50	100



Description

Ultra sensitive One Step Anti-Syphilis Cassette Test is a rapid and immunochromatographic procedure for the qualitative detection of Treponemal antibodies (IgA, IgM, IgG) generated against Treponema pallidum antigens (17KDa, 15KDa, 47KDa) in human serum/plasma with high sensitivity and specificity. Test results are read visually without any instrument. Purified recombinant syphilis antigens are employed to identify anti-syphilis antibodies specifically and it also used in detection of congenital syphilis.



Ordering Information

S. No.	Product Code	Description	Type	Units Per Box		
				Small	Medium	Large
1	SYP100	Syphilis Card (50 Test / Box)	Rapid Card Test	10	50	100



Angcard

DENGUE NS1 ANTIGEN

Description

Dengue Ns1 Antigen test is rapid and qualitative test for the detection of Dengue virus Ns1 antigen in human serum/ plasma.

This kit is for professional use and only for initial screening test and reactive samples should be confirmed by supplemental assay such as nucleic acid test and other immunological assays.



Ordering Information

Units Per Box

S. No.	Product Code	Description	Type	Small	Medium	Large
1	DECC010	DENGUE NS1 ANTIGEN (10 Test / Box)	Rapid Card Test	10	50	100
2	DECC0010	Angcard Dengue IgG/IgM (10 Test / Box)	Rapid Card Test	10	50	100
3	DECN10	Angcard Dengue Combo (10 Test / Box)	Rapid Card Test	10	50	100
4	DECC010	Angcard Dengue Combo (10 Test / Box)	Rapid Card Test	10	50	100

ESTROM

CRP (Latex Agglutination Method)



Description

This diagnostic reagent kit is for in Vitro qualitative & semiquantative determination of C-reactive protein in serum by Latex Agglutination method.

The CRP latex Reagent consists of uniform Latex particles coated with antihuman - CRP. In presence of CRP in the specimen, visible agglutination is observed. Agglutination ensures the reaction of uniform Latex particle with CRP. No agglutination indicates absence of CRP in the specimen.



Ordering Information

S. No.	Product Code	Description	Type	Units Per Box
				Small / Medium / Large / Extra Large
1	CR00025	CRP (Latex)	Agglutination	25
2	CR00050	CRP (Latex)	Agglutination	50
3	CR00100	CRP (Latex)	Agglutination	100
4	CR00150	CRP (Latex)	Agglutination	150



ESTROM

ASO (Latex Agglutination Method)

Description

This diagnostic kit is for qualitative & semiquantative estimation of ASO in the serum.

The Latex Reagent consists of Latex particles coated with streptolysin-O. When specimen is mixed with Latex reagent, in presence of ASO agglutination is observed which confirms & absence of ASO in specimen



Ordering Information

Units Per Box

S. No.	Product Code	Description	Type	Small / Medium / Large / Extra Large
1	AS00025	ASO (Latex)	Agglutination	25
2	AS00050	ASO (Latex)	Agglutination	50
3	AS00100	ASO (Latex)	Agglutination	100
4	AS00150	ASO (Latex)	Agglutination	150

ESTROM

RF Latex (Agglutination Method)



Description

This diagnostic reagent kit is used for In Vitro qualitative & semi-quantitative determination of Rheumatoid factor in patient serum.

The Latex reagent mixed with serum sample containing RF shows agglutination indicating positive test result. The Latex reagent antigen consists of polystyrene latex particles coated with specially purified human gamma globulin. Agglutination reaction depends of concentration of Rheumatoid factor in serum that may be equal or greater then sensitivity mentioned as detectable by slide test method.



Ordering Information

S. No.	Product Code	Description	Type	Units Per Box
				Small / Medium / Large / Extra Large
1	RF00025	RF (Latex)	Agglutination	25
2	RF00050	RF (Latex)	Agglutination	50
3	RF00100	RF (Latex)	Agglutination	100
4	RF00150	RF (Latex)	Agglutination	150



UROSTROM

Urine Test Strip

Description

Reagent strips for qualitative testing of Glucose, Protein, Ph and Ketone in urine as specified on the label.

The product insert describes all the tests Using UROSTROM strips. The combination of test parameters is different for each product.

Refer the appropriate section relevant to each product, before use. UROSTROM strip is easy to use requires no equipment for testing, simply dip the reagent end of strip in the sample and read the result. This is an easy to use test and can be performed even at home.



Ordering Information

Units Per Box				
S. No.	Product Code	Description	Type	Stripes
1	URG0100	Urostrom-G	Strip	100
2	URK0100	Urostrom-K	Strip	100
3	URP0100	Urostrom-P	Strip	100
4	URPH100	Urostrom-pH(Glucose,Protien & pH)	Strip	100
5	URPHK100	Urostrom-pH(Glucose,Protien,pH & Ketone)	Strip	100
6	URPHKSG100	Urostrom-pH(Glucose,Protien,pH,Ketone & Specific gravity)	Strip	100



Angvtm

Viral Transport & Preservation Media

Description

Viral Transport Kit is a specially designed transport system to collect and transport viruses in an active form to the laboratory for isolation. It is designed to maintain the viability and the virulence of the viral sample.

The Viral Transport Medium contains 3ml of transport medium in 10ml centrifuge tube, allowing specimen collection, transport and processing in the same container. Medium contains Hank's balance salts solution, bovine serum albumin, amino acid, streptomycin, penicillin and nystatin, buffered with PBS. Phenol red is added as a pH indicator. Along with transport medium a sterile nylon flocked / Dacron / polyester swab is provided for specimen collection. Nylon flocked / Dacron / Polyester swab are non inhibitory to viruses and help release of viruses into the medium easily.



Ordering Information

Units Per Box				
S. No.	Product Code	Description	Type	Unit Per Box
1	ANGVTM	Viral Transpost Media	VTM	50 x 3ml

Angcard

Covid-19 Antigen Saliva Self Test Kits



Description

Spittle and scan. That's all you have to do, and in less than 20 minutes, you can find out you are COVID positive or not or this can be done without leaving your home. By contrast, COVID-19 tests based on PCR technology require highly specialized equipment and can take roughly four hours for results. If a sample were to be tested for a specific variant using PCR technology, it would have to be genetically sequenced, which takes even more time and resources. Currently there are several at-home COVID-19 tests available in India but we introduce India's first Saliva based Self Testing Kits with ICMR Approval.



Ordering Information

S. No.	Product Code	Description	Type	Units Per Box
				Unit Per Box
1	ANGCARD	Covid-19 Antigen Saliva Self Test Kits	Saliva Based	1



ESTROM

Albumin & Total Protein Kit

Description

This kit is for in-vitro use to measure the concentration of Total Protein in serum or plasma.

The blue violet coloured complex is formed in alkaline medium when peptide bond of protein reacts with copper in the biuret reagent. The intensity of the colour formed is proportional to the proteins concentration in serum or plasma.



Ordering Information

Units Per Box				
S. No.	Product Code	Description	Type	Unit Per Box
1	ESTROM	Albumin & Total Protein Kit	KIT	4 X 50ml

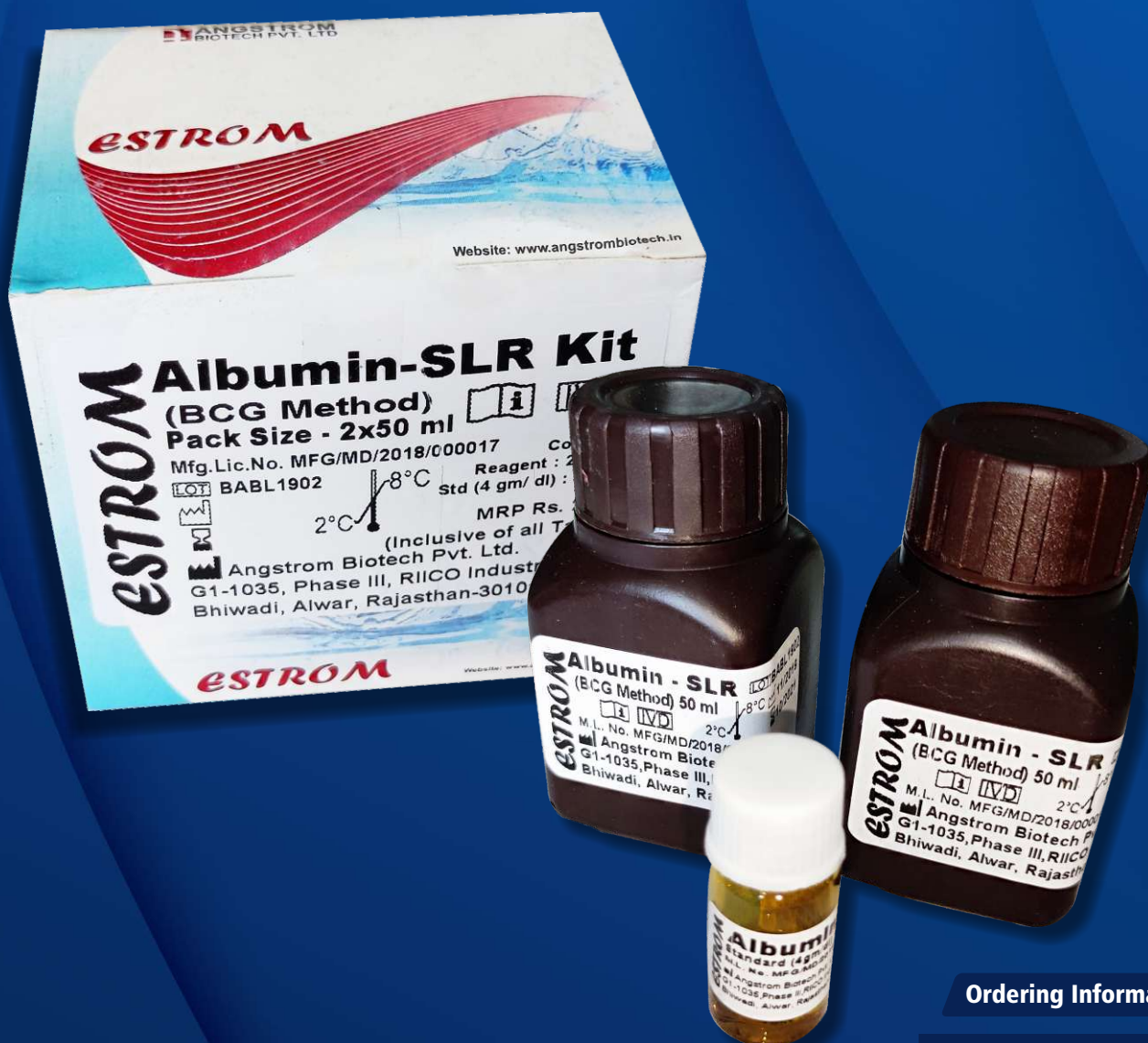


Description

This reagent kit is for quantitative estimation of Albumin in serum.

Albumin acts as cation and it binds to anionic BCG dye to form blue green coloured complex in acidic medium. absorbance of this complex is measured at 630 nm (600-650nm) or with RED filter which directly corresponds to albumin concentration.

Albumin + BCG ACIDIC pH BCG Albumin complex



Ordering Information

S. No.	Product Code	Description	Type	Units Per Box
				Unit Per Box
1	AI00250	Albumin	BCG Method	2x50 ml
2	AI00450	Albumin	BCG Method	4x50 ml



ESTROM

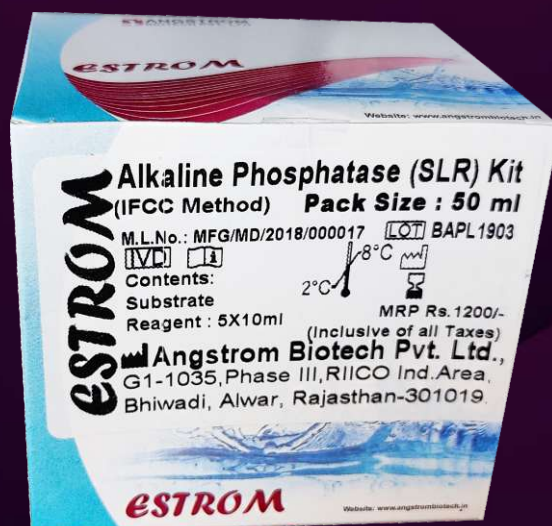
Alkaline Phosphatase (SLR)

Description

In vitro test for the quantitative determination of alkaline phosphatase (ALP) in human serum.

The substrate p-nitrophenyl phosphate (pNPP) is hydrolysed by alkaline phosphatase present in the sample to p-nitrophenol (pNP) and phosphate in alkaline medium in presence of magnesium ions. pNP gives yellow colour. The intensity of colour corresponds to alkaline phosphatase activity and is read photometrically at 405 nm.

p-Nitrophenol Phosphate + H₂O Alkaline Phosphatase
Phosphate + p-Nitrophenol



Ordering Information

Units Per Box

S. No.	Product Code	Description	Type	Unit Per Box
1	ESTROM	Alkaline Phosphatase (SLR)	IFCC Method	5x10 ml

ESTROM

Bilirubin-(Total & Direct)



Description

Kit for the quantitative determination of Total and Direct Bilirubins in serum or Plasma.

Bilirubin is estimated by reacting it with diazotized sulfanilic acid (obtained from sodium nitrite and sulfanilic acid) forms a pink coloured azocompound. Direct Bilirubin (conjugated or soluble fraction) reacts very quickly and is read by measuring colour developed in 30 seconds or reaction. The unconjugated or free Bilirubin takes longer time to react and requires an accelerator. Hence total Bilirubin is measured using Caffeine/Dimethyl Sulfoxide as an accelerator allowing the reaction to proceed for 5 minutes.



Ordering Information

S. No.	Product Code	Description	Type	Units Per Box
				Unit Per Box
1	BLJ2100	Bilirubin (T+D) J&G	Jendrassik & Grof Method	2X100 ml
2	BLJ2500	Bilirubin (T+D) J&G	Jendrassik & Grof Method	2X500 ml
3	BLD0250	Bilirubin (T+D) DMSO	DMSO	2x50 ml
4	BLD0450	Bilirubin (T) DMSO	DMSO	4x50 ml



ESTROM

Calcium - SLR

Description

This reagent kit is for quantitative estimation of Calcium (Ca^{++}) in serum.

In an alkaline medium, calcium reacts with Arsenazo III & forms a purple coloured complex. Intensity of colour is measured at 650 nm & this corresponds to calcium concentration. The presence of 8-Hydroxy quinoline in the reagent prevents interference by magnesium.



Ordering Information

Units Per Box				
S. No.	Product Code	Description	Type	Unit Per Box
1	CAAZ025	Calcium (Arsenazo III)	Arsenazo	1X25 ml
2	CAAZ251	Calcium (Arsenazo III)	Arsenazo	25X1 ml
3	CAAZ4256	Calcium (Arsenazo III)	Arsenazo	4X25 ml
4	CAAZ501	Calcium (Arsenazo III)	Arsenazo	50X1 ml

ESTROM

Creatinine Kinetic



Description

This reagent kit is for quantitative estimation of Creatinine in serum or urine.

The coloured complex is formed when creatinine present in serum or urine reacts with alkaline picrate, Intensity of colour is measured at 510nm. & it corresponds to creatinine concentration.

Creatinine + Alkaline Picrate \longrightarrow Creatinine Picrate Complex



Ordering Information

S. No.	Product Code	Description	Type	Units Per Box
				Unit Per Box
1	CRK0250	Creatinine Kinetic	KINETIC	2X50 ml
2	CRK0450	Creatinine Kinetic	KINETIC	4X50 ml
3	CRK2500	Creatinine Kinetic	KINETIC	2X500 ml
4	CRE0250	Creatinine Kinetic	end point	2X50 ml
5	CRM0225	Creatinine MR		2x25 ml



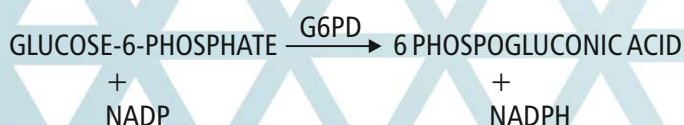
ESTROM

G-6-PDH KIT

Description

This reagent kit is for quantity estimation of G6PDH activity in erythrocytes.

The substrate Glucose-6-Phosphate is oxidized to 6-phosphogluconate with simultaneous reduction of NADP to NADPH. This reaction is catalysed by Glucose-6-Phosphate dehydrogenase. Increased absorbance is read at 340nm. A natural detergent is used to lyse the RBC's for the extraction of Glucose-6-Phosphate dehydrogenase.



Ordering Information

Units Per Box

S. No.	Product Code	Description	Type	Unit Per Box
1	G6PDK121	G - 6 - PD (Kinetic)	UV Kinetic Method	12X1 ml
2	G6PD008	G - 6 - PD (Dye)	Dye Decolourization	8 Test
3	G6PD015	G - 6 - PD (Dye)	Dye Decolourization	15 Test

ESTROM

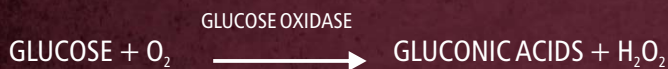
GLUCOSE SLR KIT



Description

This reagent kit is for quantitative estimation of Glucose in serum or plasma.

The substrate β D-Glucose is oxidised by glucose oxidase to form gluconic acid and hydrogen peroxide. The hydrogen peroxide so generated oxidises the chromogen system consisting of 4-Amino antipyrine and phenolic compound to a red quinoeimine dye. The intensity of the color produced is proportional to the glucose concentration and is measured at 505nm (490-530 nm) or with green filter.



Ordering Information

				Units Per Box
S. No.	Product Code	Description	Type	Unit Per Box
1	G6PDK121	G - 6 - PD (Kinetic)	UV Kinetic Method	12X1 ml
2	G6PD008	G - 6 - PD (Dye)	Dye Decolourization	8 Test
3	G6PD015	G - 6 - PD (Dye)	Dye Decolourization	15 Test



ESTROM

HDL Cholesterol - Direct

Description

High-Density Lipoproteins (HDL) are one of the major classes of plasma lipoproteins. They are composed of a number of heterogeneous particles, including cholesterol and vary with respect to size and content of lipid and apolipoprotein. HDL serves to remove cholesterol from the peripheral cells of the liver, where the cholesterol is converted to bile acids and excreted into the intestine. An inverse relationship between HDL – Cholesterol (HDL-C) levels in serum and the incidence/prevalence of Coronary Heart Disease (CHD) has been demonstrated in a number of epidemiological studies. The importance of HDL-C as a risk factor for CHD is now recognized. An accurate measurement of HDL-C is of vital importance when assessing patient risk from CHD.

(PVS) and polyethylene-glycol-methyl ether (PEGME) coupled classic precipitation method with the improvements in using optimized quantities of PVS/PEGME and selected detergents. LDL, VLDL, and chylomicron (CM) react with PVS and PEGME and the reaction results in inaccessibility of LDL, VLDL and CM by cholesterol Oxidase (CHOD) and cholesterol esterase (CHER). The enzymes selectively react with HDL to produce H₂O₂ which is detected through a Tindal reaction



Ordering Information

Units Per Box

S. No.	Product Code	Description	Type	Unit Per Box
1	DHDL010	HDL-C-Direct	PVS-PEGME Method	1x10 ml
2	DHDL020	HDL-C-Direct	PVS-PEGME Method	1x20 ml
3	DHDL040	HDL-C-Direct	PVS-PEGME Method	1x40 ml
	DHDL240	HDL-C-Direct	PVS-PEGME Method	2x40 ml

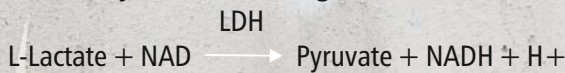


Description

The LDH-L test kit is intended to use for the in vitro quantitative kinetic determination of Lactate Dehydrogenase activity in serum

The enzyme lactate dehydrogenase (LDH) is distributed in tissues particularly heart, liver, muscle, and kidney. The enzyme found in circulation is a mixture of five isoenzymes based on their mobility. Elevated serum levels of LDH are found in serum in myocardial infarction, liver disease, renal disease, certain forms of anemia, malignant diseases, and progressive muscle dystrophy.

LDH catalyzes the following reaction :



LDH catalyzes the oxidation of lactate to pyruvate in the presence of NAD, which is subsequently reduced to NADH. The rate of NADH formation measured at 340 nm is directly proportional to serum LDH activity.



Ordering Information

				Units Per Box
S. No.	Product Code	Description	Type	Unit Per Box
1	DHDL010	HDL-C-Direct	PVS-PEGME Method	1x10 ml
2	DHDL020	HDL-C-Direct	PVS-PEGME Method	1x20 ml
3	DHDL040	HDL-C-Direct	PVS-PEGME Method	1x40 ml
	DHDL240	HDL-C-Direct	PVS-PEGME Method	2x40 ml



ESTROM

LDL Cholesterol - Direct

Description

Kit for the quantitative determination of LDL-Cholesterol concentration in human serum and plasma by direct method

Plasma lipoproteins are spherical particles containing varying amounts of cholesterol, triglycerides, phospholipids and proteins. The phospholipid, free cholesterol and protein constitute the outer surface of the lipoprotein particle, while the inner core contains mostly esterified cholesterol and triglycerides. These particles serve to solubilize and transport cholesterol and triglycerides in the bloodstream. The relative proportions of protein and lipid determine the density of these lipoproteins and provide a basis on which to begin their classification. These classes are: chylomicrons, very-low density lipoprotein (VLDL), lowdensity lipoprotein (LDL) and high density lipoprotein (HDL). Numerous clinical studies have shown that the different lipoprotein classes have very distinct and varied effects on coronary heart disease risk. The studies all point to LDL cholesterol as the key factor in the pathogenesis of atherosclerosis and coronary artery disease (CAD), while HDL cholesterol has been observed to have a protective effect. Even within the normal range of total cholesterol concentrations, an increase in LDL cholesterol can occur with an associated increased risk for CAD.



Ordering Information

Units Per Box				
S. No.	Product Code	Description	Type	Unit Per Box
1	DLDL010	LDL-C-Direct	Homogeneous Method	1x10 ml
2	DLDL020	LDL-C-Direct	Homogeneous Method	1x20 ml
3	DLDL040	LDL-C-Direct	Homogeneous Method	1x40 ml

ESTROM

MICROPROTEIN-SLR KIT



Description

Quantitative Determination of Protein in Urine / CSF only for in Vitro Diagnostic use.

In healthy persons, the urine contains no protein or only a trace amount of protein, normally the glomeruli prevent passage or protein from the blood to the glomerular filtrate. Glomerular injury causes increased permeability to plasma proteins, resulting in proteinuria, which refers to the presence of protein in the urine. A persistent finding of proteinuria is the single most important indication of renal disease. Elevated concentration of protein in cerebro-spinal fluid (CSF) can be caused by infections and intracranial pressure.

Protein in the sample reacts with pyrogallol red and molybdate in acid medium forming a coloured complex which can be measured by spectrophotometry.

Protein + Pyrogallol Red + Molybdenum Complex \longrightarrow Blue Purple coloured complex medium.



Ordering Information

				Units Per Box
S. No.	Product Code	Description	Type	Unit Per Box
1	ESTROM	Microprotein SLR - Kit	Pyrogallol Red Method	2 x 25ml



ESTROM

Sodium / Potassium / Chloride Kit

Description

Sodium-SLR (Trinders Method)

Sodium is estimated by colorimetric Trinders method. Sodium reacts with selective Chromogen producing chromophor. The intensity of the colour is directly proportional to the sodium concentration in the specimen and is measured photometrically at (600-650nm).

Potassium - SLR (Tetraphenyl Boron Method)

Potassium is estimated in the serum by turbidometric method. Potassium ions in the serum reach with Sodium tetra phenyl boron to produce insoluble precipitate of potassium tetra phenyl boron resulting in turbidity. The extent of turbidity is directly proportional to the amount of potassium present and is measured at 620 nm photometrically.

Chloride(Thiocyanate Method)

Mercuric thiocyanate present in the reagent reacts with chloride ions present in the sample, forming mercuric chloride and free thiocyanate ions. Ferric ions present in the reagent reacts with these free thiocyanate ions to form a coloured complex. The intensity of the colour produced is measured at 480nm (470-510nm) and is proportional to the chloride ions present in the sample



Ordering Information

Units Per Box				
S. No.	Product Code	Description	Type	Unit Per Box
1	SPC0015	Sodium / Potassium / Chloride Kit	-	15 Test



Description

This reagent kit is for quantitative estimation of Reagin antibodies produced in response to infectious disease called Syphilis in human.

The RPR antigen reagent consists of antigen coated with carbon particles. The specimen when allowed to react with the reagent in the test circle of the disposable card, produce an agglutination in presence of Reagin antibodies.



Ordering Information

S. No.	Product Code	Description	Type	Units Per Box
				Unit Per Box
1	RPR0050	RPR (Flocculation)	Rapid Plasma Reagin	50 Tests
2	RPR0100	RPR (Flocculation)	Rapid Plasma Reagin	100 Tests
3	RPR0250	RPR (Flocculation)	Rapid Plasma Reagin	250 Tests
4	RPR0500	RPR (Flocculation)	Rapid Plasma Reagin	500 Tests



ESTROM

SGOT (AST)

Description

This reagent kit is for quantitative estimation of Glutamate Oxaloacetate Transaminase Aspartate transferase activity in serum or plasma.

In the bisubstrate reaction, transfer of aminogroup from L-aspartate to alpha-ketoglutarate gives oxaloacetate and glutamate, this reaction is catalysed by glutamate oxaloacetate transaminase. Further malate dehydrogenase (MDH) acts on oxaloacetate to yield malate coupled with oxidation of NADH to NAD. The rate of decrease in absorbance is measured at 340 nm which corresponds to the GOT activity.



Ordering Information

Units Per Box

S. No.	Product Code	Description	Type	Unit Per Box
1	SGP1211	SGOT	IFCC	12X1.1 ml
2	SGP0105	SGOT	IFCC	10x5 ml
3	SGP0520	SGOT	IFCC	5X20 ml
4	SGP0450	SGOT	IFCC	4X50 ml

ESTROM

SGPT (ALT)



Description

This reagent kit is for quantitative estimation of Glutamate Pyruvate Transaminase/L-alanine transferase activity in serum or plasma.

In the bisubstrate reaction, transfer of aminogroup from L-alanine to ketoglutarate gives pyruvate and glutamate, this reaction is catalysed by pyruvate oxaloacetate transaminase. Further Lactate Dehydrogenase (LDH) acts on Pyruvate to yield Lactate coupled with oxidation of NADH to NAD. The rate of decrease in absorbance is measured at 340 nm which corresponds to the GPT activity.



Ordering Information

S. No.	Product Code	Description	Type	Units Per Box
				Unit Per Box
1	SPP0520	SGPT	IFCC	5X20 ml
2	SPP0450	SGPT	IFCC	4X50 ml
3	SPP1211	SGPT	IFCC	12X1.1 ml
4	SPP0105	SGPT	IFCC	10x5 ml



ESTROM

TRIGLYCERIDES-SLR KIT

Description

This reagent kit is for quantitative estimation of Triglycerides in serum/plasma.

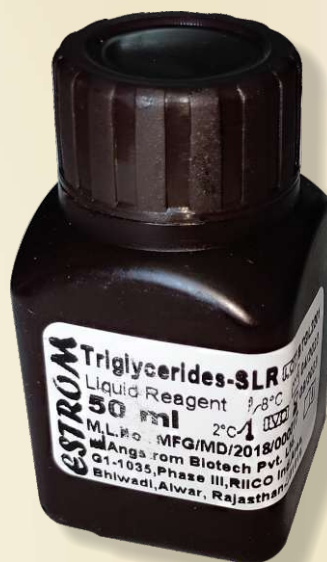
The triglycerides present in the serum is catabolised into glycerol and free fatty acids by lipoprotein lipase. Liberated glycerol is converted to glycerol-3-phosphate in presence of glycerol kinase and ATP. Glycerol 3 phosphate is acted upon by glycerol-3-phosphate oxidase to form hydrogen peroxide. This together with phenolic compound and 4-Aminoantipyrine in presence of peroxidase gives the purple colour complex. The intensity of the colour is measured at 546 nm (530-570 nm) or green filter and corresponds to the triglycerides concentration.

TRIGLYCERIDES + H₂O $\xrightarrow{\text{LPL}}$ GLYCEROL + FATTY ACIDS

GLYCEROL + ATP $\xrightarrow{\text{GK}}$ GLYCEROL-3 PHOSPHATE + ADP

GLYCEROL - 3 PHOSPHATE + H₂O $\xrightarrow{\text{GPO}}$ + DIHYDROXYACETONE PHOSPHATE + H₂O₂

H₂O₂ + 4-AMINOANTIPYRINE + PHENOLIC COMPOUND $\xrightarrow{\text{POD}}$ QUINONEIMINE + H₂O



Ordering Information

Units Per Box

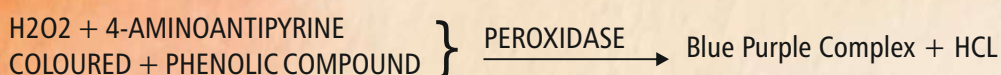
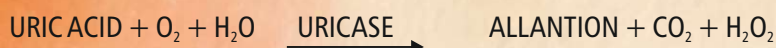
S. No.	Product Code	Description	Type	Unit Per Box
1	600	Triglycerides (LS)	GPO	5x10 ml
2	TGL0425	Triglycerides-L	GPO	4x25 ml
3	TGL0450	Triglycerides-L	GPO	4x50 ml
4	TGL0550	Triglycerides-L	GPO	5x50 ml
5	TGL5100	Triglycerides-L	GPO	5x100 ml



Description

This reagent kit is for quantitative estimation of Uric Acid in serum, plasma or urine.

The substrate Uric Acid is converted into allantoin and hydrogen peroxide by the action of uricase. Chromogen, 4-Aminoantipyrine and phenolic compound combined with hydrogen peroxide in presence of peroxidase gives coloured complex. The intensity of colour corresponds to uric acid concentration and is measured at 546 nm (530-560 nm) or with green filter.



Ordering Information

S. No.	Product Code	Description	Type	Units Per Box
				Unit Per Box
1	UAL0610	Uric Acid	Uricase	6x10 ml
2	UAL0425	Uric Acid	Uricase	4x25 ml
3	UAL0450	Uric Acid	Uricase	4x50 ml
4	UAL0550	Uric Acid	Uricase	5x50 ml
5	UAL5100	Uric Acid	Uricase	5x100 ml



ESTROM

Widal Kit

Description

This reagent kit is used for detection of specific antibodies produced in Serum as a result of stimulation by specific antigen of Salmonella (group).

The immunospecific antibodies present in serum of infected host readily react with 'O' & 'H' antigen present in the killed bacterial suspension of Salmonella & results in agglutination or clumps on the slide.

This disease like enteric fever or typhoid fever shows symptoms generally by very high consistent fever, loss of appetite, transitory bacteremia, round or oval shaped ulcer with smooth peritoneal surface of Peyer's patches and solitary lymphoid follicles of ileum etc. The disease is caused by organism salmonella typhosa. This micro-organism produces two types of antigen, 'O' stimulation, host immune system produces antibodies to counteract the effect of corresponding antigen. The one more species of salmonella S. paratyphi A or paratyphi B causes paratyphoid fever that is characterized by milder course of disease. Also, this organism produces somatic 'O' & flagellar antigen which is termed as A (H) & B(H) respectively.

Similar antigenic properties also observed in Salmonella sup. that causes food poisonings & fetal infection.



Ordering Information

Units Per Box

S. No.	Product Code	Description	Type	Unit Per Box
1	Wi00045	Widal	Stained Salmonella Antigens	4x5 ml
2	Wi00225	Widal	Stained Salmonella Antigens	2+2x5 ml

PRODUCT LIST

PRODUCT NAME

M.R.P.



Angstrom
BIOTECH PVT. LTD.

WE ARE CERTIFIED

We at Angstrom are engaged in the task of manufacturing indigenously top Quality diagnostic kits. Our kits offer the Quality performance, which equals if not better foreign names, at Indian prices. we have FDA approval for manufacturing. Our manufacturing unit is designed according to new FDA GMP guide lines and conforms to the conditions laid down in the Factory's act 1948.





Angstrom
BIOTECH PVT. LTD.

Corporate Office :
29 A-B-C, Ground Floor, Tower-B2, Spaze I-Tech Park,
Sec-49, Sohna Road, Gurgaon-122002 (Haryana)

Manufacturing Unit :
Plot No. G1-1035 & A-904 RIICO Industrial Area,
Bhiwadi, Alwar, Rajasthan-301019 India



CONSISTENT QUALITY WITH COMPLETE SATISFACTION